

## Scale requirements for wind instruments

Each student will be asked to play three of the required scales for his instrument.

The first scale will be the chromatic scale, which will be performed slurred ascending and descending for the number of octaves shown, using the



The remaining two scales will be selected by the judging panel from the



Instrument	Scales and Number of Octaves								Chromatic - # 8va
Flute	Db-2	Ab-2	Eb-2	Bb-2	F-2	C-3	G-2		C-3
Oboe	Db-2	Ab-1	Eb-1	Bb-1	F-1	C-2	G-1		C-2
Bassoon	Db-2	Ab-2	Eb-2	Bb-2*	F-2	C-2	G-2		F-2
Trombone	Db-1	Ab-2	Eb-1	Bb-2	F-2	C-1	G-2		Bb-2
Mallets	Db-2	Ab-2	Eb-2	Bb-2	F-2	C-2	G-2		C-2
Baritone BC	Db-1	Ab-2	Eb-1	Bb-2	F-2	C-1	G-2		Bb-2
Baritone TC	Eb-1	Bb-2	F-1	C-2	G-2	D-1	A-2		C-2
Tuba	Db-1	Ab-2	Eb-1	Bb-2	F-2	C-1	G-2		Bb-2
Cornet/Trumpet	Eb-1	Bb-2	F-1	C-2	G-2	D-1	A-2		C-2
Bb Soprano Clarinet	Eb-2	Bb-2	F-3	C-2	G-3	D-2	A-2		E-3
Bb Bass Clarinet	Eb-1	Bb-2	F-2	C-2	G-2	D-2	A-2		G-2
Bb Contra Clarinet	Eb-1	Bb-2	F-2	C-2	G-2	D-1	A-2		G-2
Bb Tenor Sax	Eb-2	Bb-2	F-2	C-2	G-1	D-2	A-1		C-2
Eb Alto Sax	Bb-2	F-2	C-2	G-1	D-2	A-1	E-2		C-2
Eb Baritone Sax	Bb-2	F-2	C-2	G-1	D-2	A-1	E-2		C-2
Eb Alto Clarinet	Bb-2	F-2	C-2	G-2	D-2	A-2	E-2		G-2
Eb Contra Clarinet	Bb-1	F-2	C-2	G-2	D-1	A-2	E-1		G-2
French Horn	Ab-2	Eb-2	Bb-2	F-2	C-2*	G-2	D-2		G-2

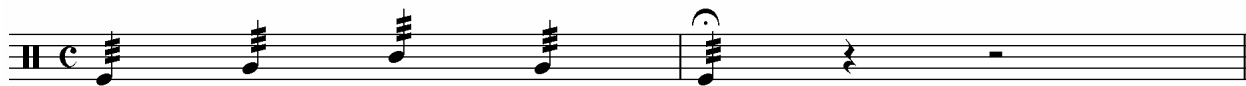
\*lower 2 octaves

APPENDIX D - continued

### Scale/Rudiment Requirements

#### Timpani Tuning

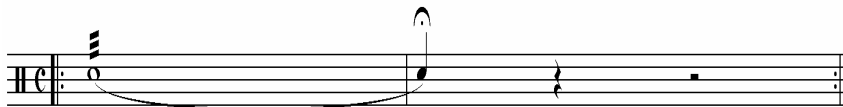
A three note major triad (root, third, & fifth) in the keys of G, Ab, A, and Bb. A pitch pipe, furnished by the student, may be used to tune only the root of the triad. Electronic tuners are not permitted. One of the above triads will be performed as shown below. **A maximum of 60 seconds will be allowed for tuning each triad, and only for the first playing.**



### Snare Drum Rudiments

Three of the following snare drum rudiments will be performed as shown below. **Each rudiment must be performed a minimum of 4 times.**

Long Roll: Rudimental (double stroke - controlled bounce)



Buzz or Concert roll



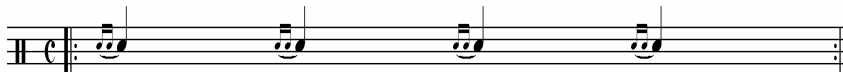
Flam Accent #1



Flam Accent #2



3-stroke Ruff (either single or double stroke for the grace notes)



4-stroke Ruff (single stroke)



## APPENDIX E

### Sequence for the Student During Acceptance Auditions

1. A student guide will escort you from the warm-up room to the audition room. You must take all belongings out of the warm-up room, as you will not be allowed to return after your audition. No communication of any kind is permitted between any students who have been auditioned and those waiting to be auditioned on the same part.
2. Students may not have audio devices, cell phones, pagers, etc., with them during any part of the audition process. Violation of this policy may result in disqualification from the audition and/or festival.